

GEORADAR EXPLORER 2.0



EPT
Easy Pipe Tracking



FEATURES AND APPLICATION



OPTIC FIBER



ACCESS NETWORK



UNDERGROUND
POWERLINES



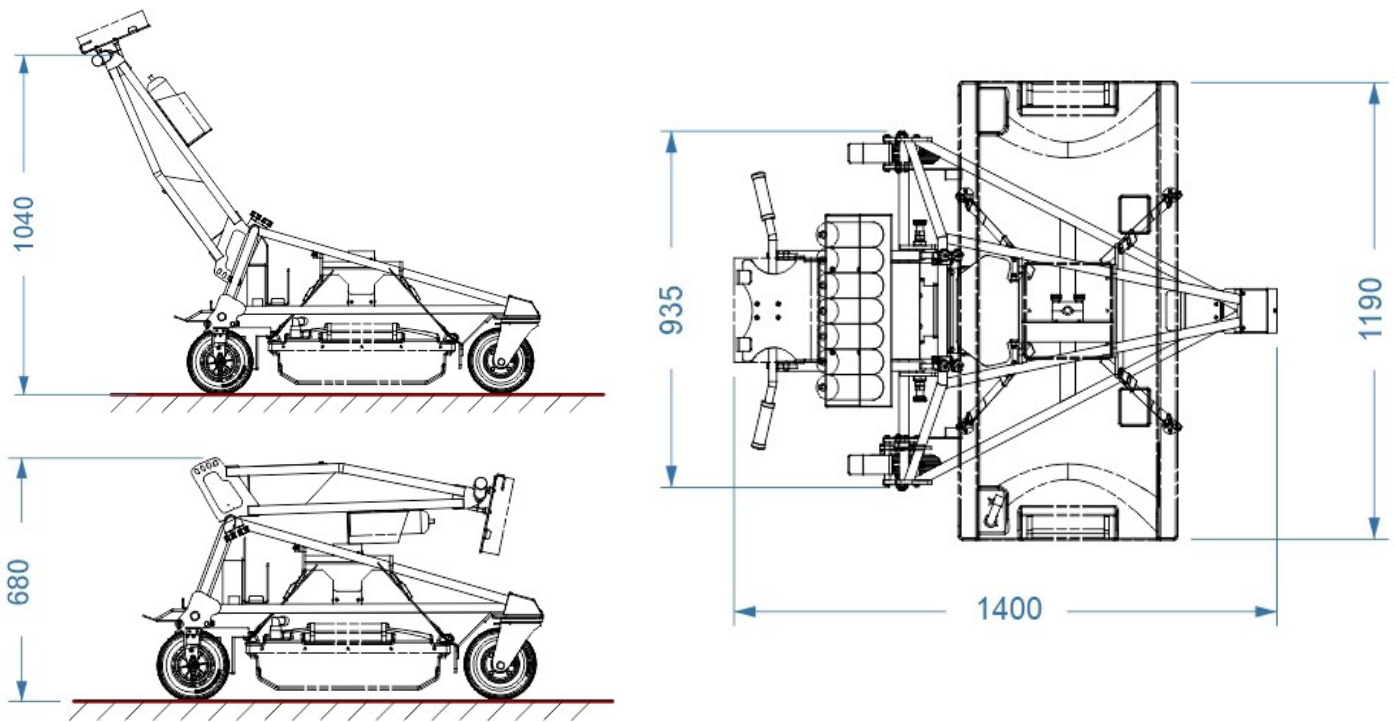
LONG DISTANCE
NETWORKS

TESMEC GEORADAR EXPLORER 2.0

Tesmec Georadar Explorer 2.0 is a Ground Probing Radar - GPR - which detects underground utilities, optimizing trenching and laying operations. This system has been developed to guarantee the safety of trenching work sites and to increase operational speed, avoiding the breakdown of existing underground utilities. Utilizing Explorer 2.0 reduces risks and costs by providing non destructive testing for locating materials and buried objects.

It is equipped with EPT App - Easy Pipe Tracking - the top precision App that grants the highest accuracy of the position and depth of the existing underground infrastructure detected.

EXPLORER
2.0



GEORADAR EXPLORER 2.0 TECHNICAL SPECIFICATIONS

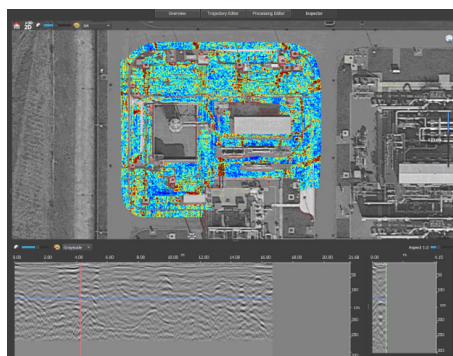
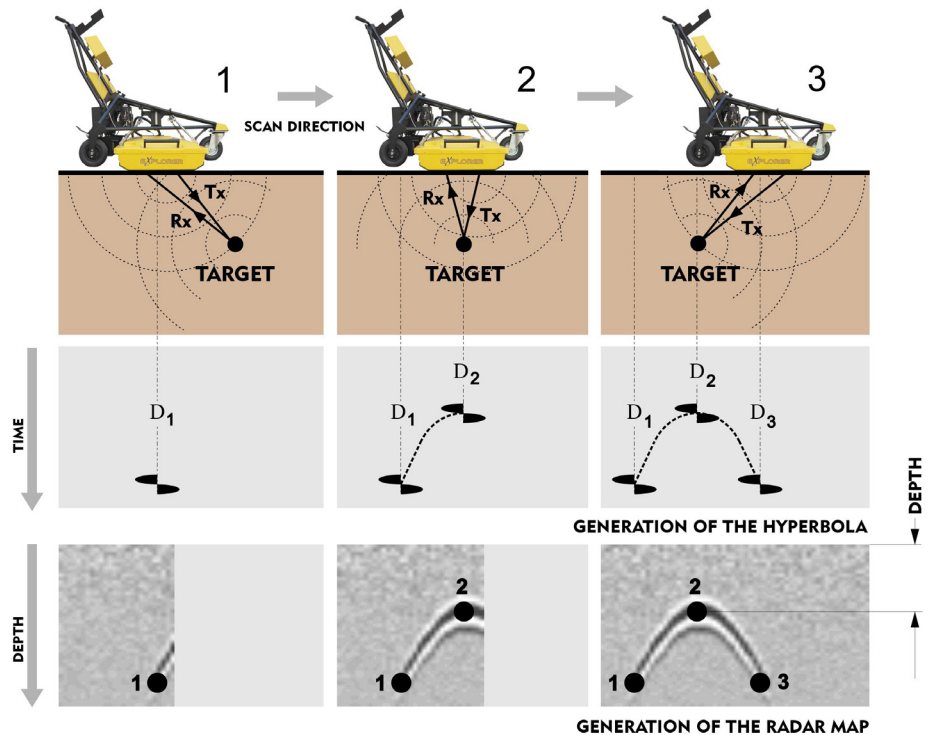
System specification

Overall weight (PC included)99 pounds (45 kg)
 Recommended Laptop.....Panasonic CF 20
 Max. acquisition speed.....3.7 mph (6 km/h)
 Max. acquisition speed pulled by vehicle.....10.6 mph (17 km/h)
 PositioningGPS GG04 or GPS FLX100 (Leica)
 Radar power supply.....SLA battery 12VDC 12 Ah
 Enviromental.....IP65
 Antenna footprint.....47" x 22" (120 x 57 cm)
 Number of chan.....32 (23VV - 9HH)
 Antenna central frequency.....600 MHz
 Antenna polarization.....HH and VV
 Scan width.....38" (96 cm)
 Certification.....EC, FCC, IC

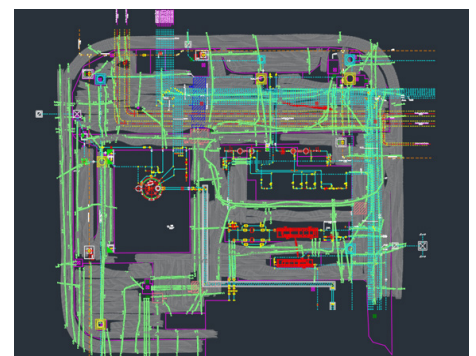
Software specifications

OneVision Acquisition Software:

- Automatic calibration for an easy and quick start-up
- Visualization and storage of antenna array data set (32 channels)
- Real-time visualization of radar tomography (time slices)
- On-site marking via software of targets and pipes
- Connection with NMEA positioning device
- Export to IDS GeoRadar GeoMap, dxf, shp and kml formats
- Multilanguage support
- Metric and Imperial units



GPR DATA ANALYSIS



3D AS BUILT OVERLAPPING